



# LT-DJBEKE\_200

## ADSS (Max span : 200m) Aerial Fiber Optic Cable

### Description / Applications

- All Dielectric Self Supporting (ADSS) Cable for Aerial Application.
- Black PE jacketed cable is a UV-stabilized, water blocked cable for outdoor aerial applications.
- Loose tube design provides stable and highly reliable transmission parameters for a variety of voice, data, video and imaging applications.
- High modulus aramid yarns provides high tensile strength and long term reliability

### Applications

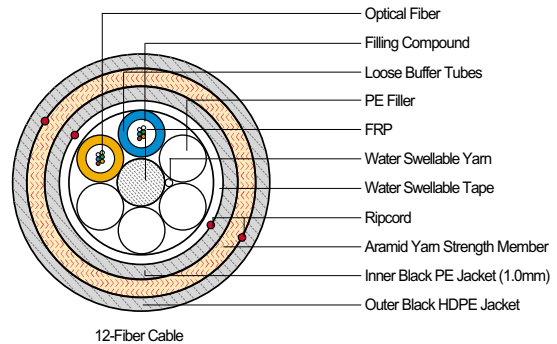
- Low-voltage transmission and distribution System (Space potential ≤ 12 kV)
- Railways and Telecommunications pole route.
- Suitable for all type of aerial lines

### Specification

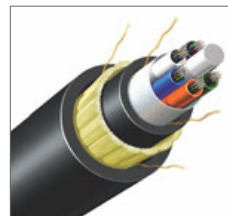
- IEC 60793 / IEC 60794, ITU-T G652D, Telcordia GR-20-CORE

### Color Identification

01 - Blue	05 - Slate	09 - Yellow
02 - Orange	06 - White	10 - Violet
03 - Green	07 - Red	11 - Rose
04 - Brown	08 - Black	12 - Aqua



12-Fiber Cable



36-Fiber Cable

### Mechanical Characteristics

Storage Temperature : -40 to + 80°C / Operating Temperature : -30 to + 70°C

Fiber Count	LSC Part Number	Nominal* Outer diameter		Nominal* Weight		Maximum Tensile Load				Crush Load				Minimum Bend Radius			
		[mm]	[inch]	[kg/km]	[lb/1000 ft]	Short Term	Long Term	Short Term	Long Term	Short Term	Long Term	Loaded	Installed	Loaded	Installed		
6	LS09ADSS006-S200	12.8	0.50	125	84	2,700	125	220	125	220	125	110	63	25.6	10.08	12.8	5.04
12	LS09ADSS012-S200	12.8	0.50	125	84	2,700	125	220	125	220	125	110	63	25.6	10.08	12.8	5.04
24	LS09ADSS024-S200	12.8	0.50	125	84	2,700	125	220	125	220	125	110	63	25.6	10.08	12.8	5.04
36	LS09ADSS036-S200	12.8	0.50	125	84	2,700	125	220	125	220	125	110	63	25.6	10.08	12.8	5.04
48	LS09ADSS048-S200	13.3	0.52	135	91	2,700	125	220	125	220	125	110	63	26.6	10.47	13.3	5.24
72	LS09ADSS072-S200	13.3	0.52	135	91	2,700	125	220	125	220	125	110	63	26.6	10.47	13.3	5.24
96	LS09ADSS096-S200	14.6	0.57	160	107	2,700	125	220	125	220	125	110	63	29.2	11.50	14.6	5.75
144	LS09ADSS144-S200	17.5	0.69	230	154	2,700	125	220	125	220	125	110	63	35.0	13.78	17.5	6.89
216	LS09ADSS216-S200	18.4	0.72	245	165	2,700	125	220	125	220	125	110	63	36.8	14.49	18.4	7.24
288	LS09ADSS228-S200	20.4	0.80	300	201	2,700	125	220	125	220	125	110	63	40.8	16.06	20.4	8.03

LSC Part No. .... LS   ADSS   - S

### Transmission Performance 1310nm/ 1550nm

Max. Attenuation	(dB/km)	0.35 / 0.25
Max. Dispersion	(ps/nm-km)	3.5 / 18
Max. PMD	(ps/√km)	0.2
Max. Field Diameter	(um)	92±0.4/10.5±1.0

### Loading / Sag Estimation

Items	Unit	Loading Estimation						
		Medium						
NECS Condition Code	-							
Fiber Counts	-	6~36	48~72	96	144	216	288	
Installation	Load	kg(lb)	302	328	403	571	6.3	753
	Sag	m(ft)	2.0	2.0	2.0	2.0	2.0	2.0
Every Day Stress	Load	kg(lb)	292	316	388	552	586	733
	Sag	m(ft)	2.1	2.1	2.1	2.1	2.1	2.1
Max. Operating Stress	Load	kg(lb)	558	590	667	841	903	1050
	Sag	m(ft)	6.2	6.1	5.8	5.4	5.2	4.9
Max. Sag	Vertical	m(ft)	6.1	6.0	5.8	5.4	5.3	5.1
	Horizontal	m(ft)	4.5	4.4	4.1	3.6	3.6	3.3

### Transmission Performance

Standard Reel Length	4000m
----------------------	-------

\*Other Cable lengths may be available upon request

# LT-DJBEKE 400

## ADSS (Span 400m) Aerial Fiber Optic Cable

### Description / Applications

- All Dielectric Self Supporting (ADSS) Cable for Aerial Application.
- Black PE jacketed cable is a UV-stabilized, water blocked cable for outdoor aerial applications.
- Anti-tracking Jacket is also available upon request
- Loose tube design provides stable and highly reliable transmission parameters for a variety of voice, data, video and imaging applications.
- High modulus aramid yarns provides high tensile strength and long term reliability.

### Applications

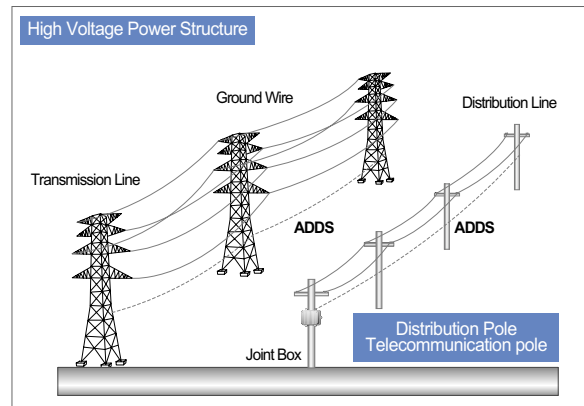
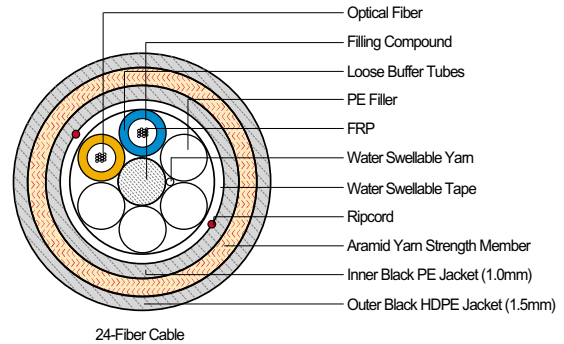
- Low-voltage transmission and distribution System
- Space potential  $\leq 12$  kV (with PE Jacket),  $\leq 24$  kV (with Anti-Tracking Jacket)
- Railways and Telecommunications pole route.
- Suitable for all type of aerial lines.

### Specification

- IEC 60793 / IEC 60794, ITU-T G652D
- IEEE P1222, Telcordia GR-20-CORE

### Color Identification

01 - Blue	05 - Slate	09 - Yellow
02 - Orange	06 - White	10 - Violet
03 - Green	07 - Red	11 - Rose
04 - Brown	08 - Black	12 - Aqua



### Mechanical Characteristics

Storage Temperature : -40 to + 70°C / Operating Temperature : -20 to + 60°C

Fiber Count	LSC Part Number	Nominal* Outer diameter		Nominal* Weight		Maximum Tensile Load				Crush Load				Minimum Bend Radius			
		[mm]	[inch]	[kg/km]	[lb/1000 ft]	Short Term	Long Term	Short Term	Long Term	Short Term	Long Term	Loaded	Installed	Loaded	Installed		
6	LS09ADSS006-S400	14.0	0.55	150	101	2,700	125	220	125	220	125	110	63	28.0	11.02	14.0	5.51
12	LS09ADSS012-S400	14.0	0.55	150	101	2,700	125	220	125	220	125	110	63	28.0	11.02	14.0	5.51
24	LS09ADSS024-S400	14.0	0.55	150	101	2,700	125	220	125	220	125	110	63	28.0	11.02	14.0	5.51
36	LS09ADSS036-S400	14.0	0.55	150	101	2,700	125	220	125	220	125	110	63	28.0	11.02	14.0	5.51
48	LS09ADSS048-S400	14.0	0.55	150	101	2,700	125	220	125	220	125	110	63	28.0	11.02	14.0	5.51
72	LS09ADSS072-S400	14.0	0.55	150	101	2,700	125	220	125	220	125	110	63	28.0	11.02	14.0	5.51
96	LS09ADSS096-S400	15.4	0.61	180	121	2,700	125	220	125	220	125	110	63	30.8	12.13	15.4	6.06

LSC Part No. .... LS  ADSS  - S  <sup>1</sup> <sub>2</sub>

### Transmission Performance 1310nm/ 1550nm

Max. Attenuation	(dB/km)	0.35 / 0.25
Max. Dispersion	(ps/nm-km)	3.5 / 18
Max. PMD	(ps/√km)	0.2
Max. Field Diameter	(um)	92±0.4/ 105±1.0

\*ITU-T G652 Compliant

### Transmission Performance

Standard Reel Length	4000m
----------------------	-------

\*Other Cable lengths may be available upon request

### Loading / Sag Estimation

Items	Unit	Loading Estimation				
		6~72		96		
Fiber Counts	-	Medium	Light	Medium	Light	
NFSC Condition Code	-	400	450	400	440	
Maximum Span Length	m					
Installation	Load	kg(lb)	503	566	604	664
	Sag	m(ft)	6.0	6.8	6.0	6.6
Every Day Stress	Load	kg(lb)	496	558	594	654
	Sag	m(ft)	6.1	6.9	6.1	6.7
Max. Operating Stress	Load	kg(lb)	1061	1057	1200	1192
	Sag	m(ft)	14.1	15.2	13.5	14.2
Max. Sag	Vertical	m(ft)	14.0	10.0	13.6	9.8
	Horizontal	m(ft)	10.0	16.6	9.4	15.6